



Find out about Winsford Cottage Hospital's past...

Hello! Welcome to Winsford Cottage Hospital.

My name is Billy, it's 1916 and I'm eight years old. I live on a farm just outside the nearby village of Beaworthy.

Last week, whilst playing with my sister on the farm, I fell headfirst off a pile of haystacks and bumped my head on the concrete.

Dad and I walked to Winsford Cottage Hospital -well, dad carried me a lot of the way – to see if the nurses there could fix the cut on my forehead. We're lucky that the hospital is here – I'm not sure I could have made the journey to Okehampton, our next nearest hospital, without fainting from pain!

The nurses put six stitches in the cut and put a big bandage on my head. They told dad that I have concussion and so I need to rest here for a few days. I'm sad that I'll have a big scar on my head but at least I have a story to tell in the future! Have you ever injured yourself? What did you do?



Rifleman John Gilmour whilst recovering from his war wounds at the hospital in 1915 painted this painting of Winsford titled, 'My Little Grey Home'.

Fact:

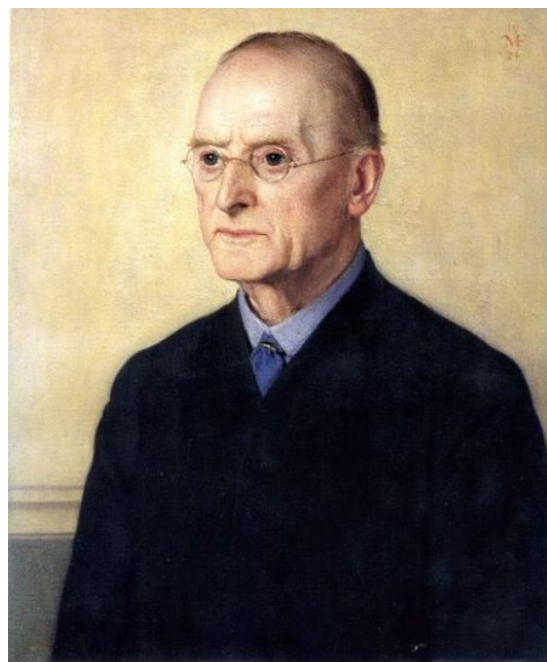
Shrapnel is pieces of a bomb or shell that have been thrown out by an explosion. A common cause of injury during the war.

I'm not the only one staying here – the wards have become home to many soldiers who have been injured in the Great War we're fighting with Germany. We've all been comparing wounds out on the verandah. Private Eden came in with a gunshot wound to his leg and had to have **shrapnel** removed in the mini operating theatre. He's really brave and has been telling loads of stories about the war.



When I'm listening to horror stories from the war, the ward sister, Mary, comes to talk to me. I've known Mary since I was born (in this very hospital!) as she lives in Halwill Junction and often comes to our farm to buy eggs. Mary has been explaining why the hospital was built and who designed it – it's fascinating!

A rich lady called Maria Medley built it in memory of her husband George, in 1898. Back then, hospitals were pretty miserable places to be and locals had to travel for miles to get to them or else stay at home and die from something a doctor could have put right! Mrs Medley wanted a cheerful place where people from nearby villages could come to get medical help. So she asked an **architect** (say *ark-ee-tekt*) called Charles Voysey to design the new hospital. She wanted it to be small and feel a bit like someone's home.



Charles Voysey – the Arts & Crafts architect who designed Winsford Cottage Hospital.



Winsford Cottage Hospital as it was when Billy recovered here in 1916.

Although I've had a pretty rotten time this last week, I'm sure it would have been a lot worse had I not had such a beautiful place to recover in. I really love it here and I even heard one of the soldiers saying that he'd take another bullet to his arm if it meant he could come back here to recover.

What do you make of it? It's not like your ordinary hospital is it?



Unruly Rulers

Who were the Saxe-Coburgs and Windsors?

Saxe-Coburg was the surname of German Prince Albert who was Queen Victoria's husband. When Victoria died **Saxe-Coburg** continued as the royal family surname. It changed to **Windsor** in 1917 because England was fighting against Germany in World War One and the King was worried British people wouldn't like a German royal family anymore - so he changed them to **Windsors**, after the castle.



King Edward VII

He loved shooting game and had an eye for the ladies! A grandad by the time he became king, he wanted peace not war.

1837

Queen Victoria

A good queen who was never 'amused'. She ruled more than a fifth of the earth's population as Empress – Wowza!



1901

1910

King George V

A boring but good king. He loved stamps but also loved his country, always trying to do the best for it.



1936

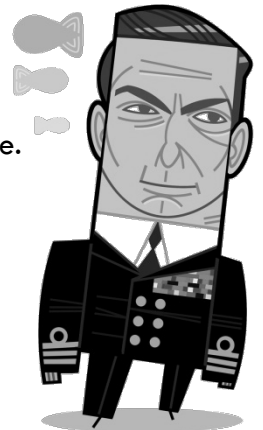
King Edward VIII

A romantic and selfish king. Married the woman he loved and 6 months later gave the throne away to his brother, George.

1936

King George VI

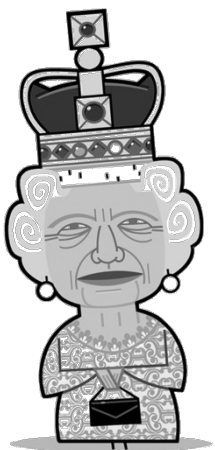
A very good king who loved his people. Even when Buckingham Palace was bombed in World War Two he stayed in London with his family to show everyone was in it together!



1952

Queen Elizabeth II

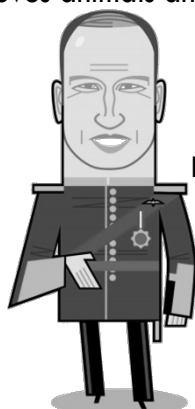
Good queen Lilibet has been on the throne the longest of all the rulers! She loves animals and has 5 corgis. Woof woof!



Who's next???

Prince Charles

Prince William





Meet Queen Victoria

– who ruled when Winsford Cottage Hospital was built.



Hi Vicky!

So when did you become queen?

I became queen on the 20 June 1837 when I was 18.

What's your nickname?

Some people call me The Grandmother of Europe. I had 9 children who married different European princes and princesses. I had 42 grandchildren in total!

What is your favourite thing to do?

I loved visiting Scotland. I even built a castle so that I could go all the time!

What is the naughtiest thing you've ever done?

How dare you, I am never naughty. Everyone must be well behaved at all times.



What does Winsford Cottage Hospital look like?

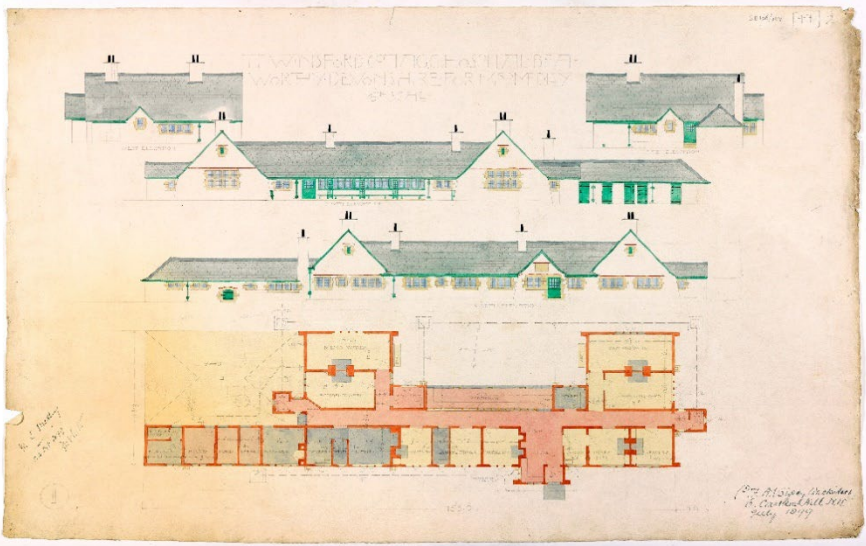
Can you walk all the way around it?

Does Winsford Hospital look like other buildings in the area? What's different? What's the same?

Cottage Hospitals became popular in the 1860's when it became fashionable for rich estate owners to give back to their communities. The first cottage hospital was built in Surrey in 1859 by Dr Albert Napper, after he needed somewhere close in his village to deal with an emergency – a cart ran over a man's leg!

Winsford Cottage Hospital was built by Maria Medley in memory of her husband George in the 'Arts and Crafts' style. She asked Charles Voysey to design it for her – it's the only hospital he ever designed.

The Arts and Crafts movement stood for traditional craftsmanship using simple forms, and Voysey was one of its best **architects** (say *ark-ee-tects*).



The picture on the left is Voysey's plan and design for Winsford Hospital. It has the floorplans to show what each space should be used for.

He has drawn all sides of the building to show what they should look like. Each side of the building is called an **elevation**.

The sweeping roof made from Delabole slate, long stone windows, the **roughcast** on the walls and the large welcoming entrance hall are very much Voysey's style and make the building feel more like an elegant house than a hospital.

Fact:

Roughcast: an external layer of pebbles, sand or gravel added to a layer of cement.

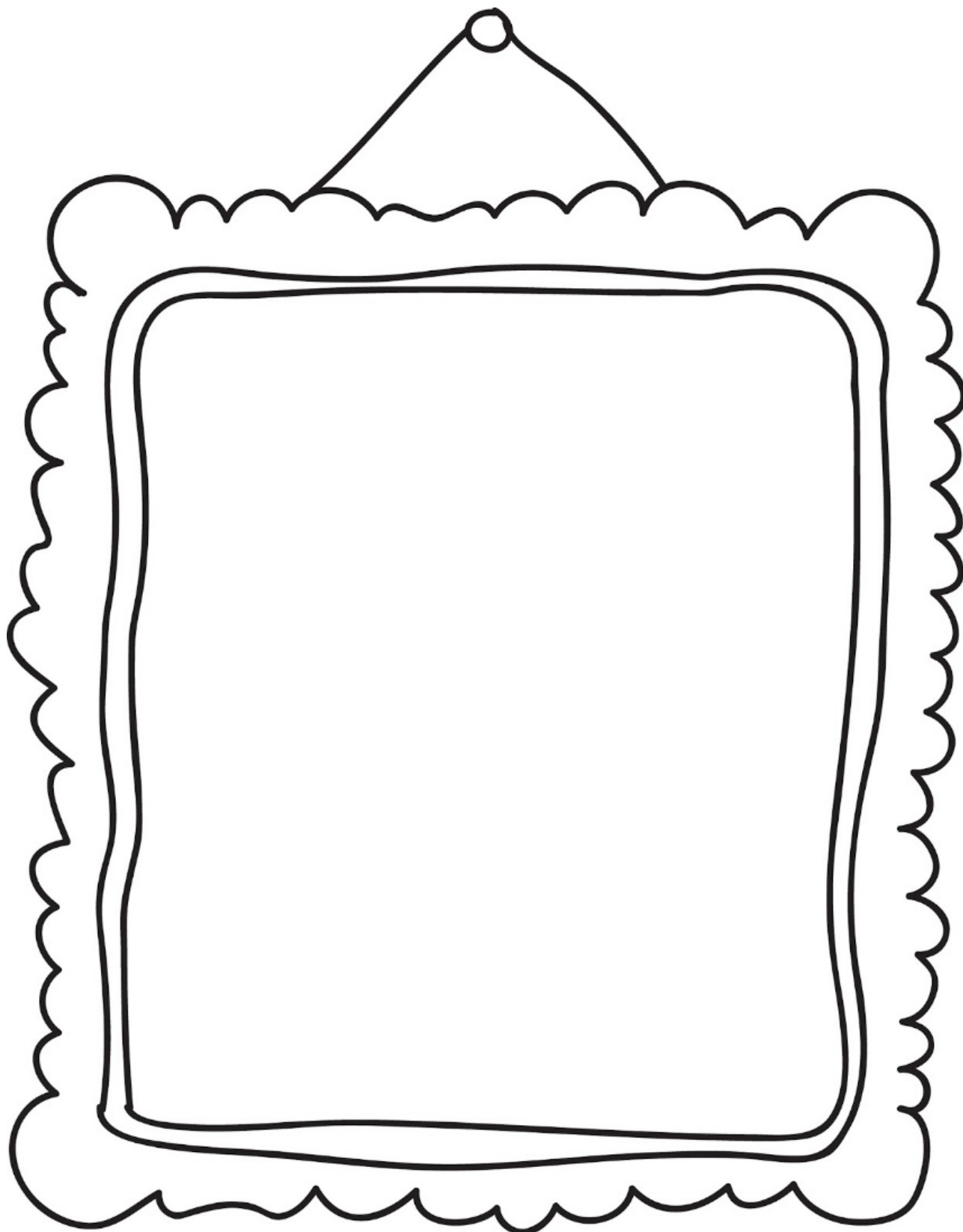


Buildings are quite easy to draw, particularly those with repeated patterns.

They are usually made up of lots of geometric shapes, like squares, triangles and circles.

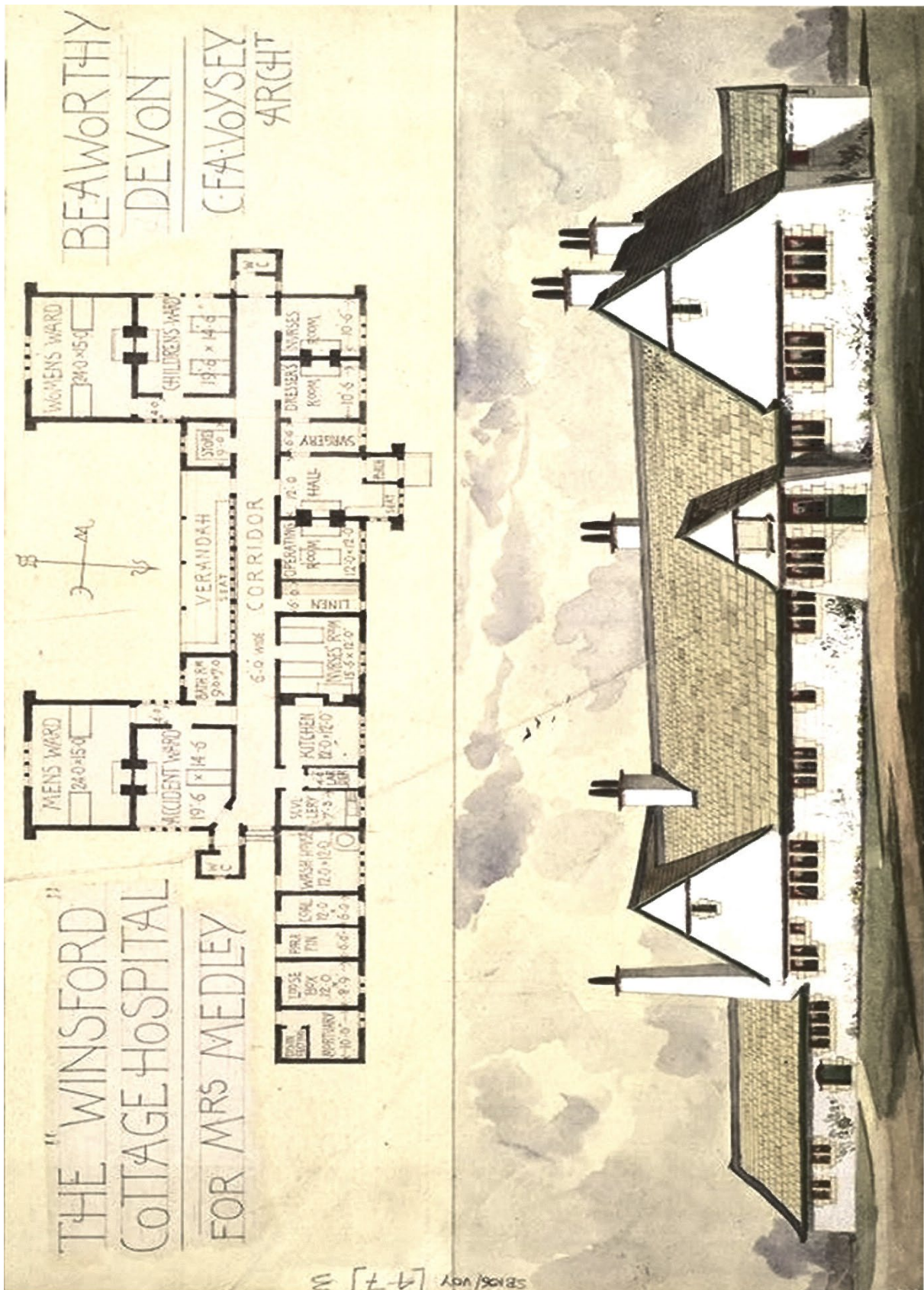
Have a go at drawing the front of Winsford Hospital. Maybe you could use the floorplans on the previous page as a guide?

Please tell an adult where you are going so they don't worry about where you are!





The picture below is Voysey's design for Winsford Hospital. It was built very true to the design.. Can you work out where your bedroom is on these floorplans? What is the children's ward used for today?





What is Winsford Hospital built from?

Voysey loved using local building materials. The stone surrounds on the windows are from a local quarry and the **ironmongery** was probably cast at a local smithy.



Fact:

Ironmongery refers to items like door and window latches, hinges and curtain poles. They are made by a blacksmith in his workshop or 'smithy'.

What other building materials can you find outside and inside Winsford Cottage Hospital?

Stone

Glass

Circle what you can see and note down where you found them.

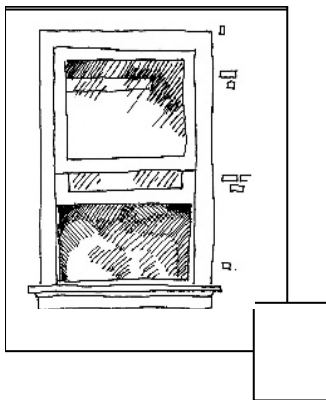
Wood

Plastic

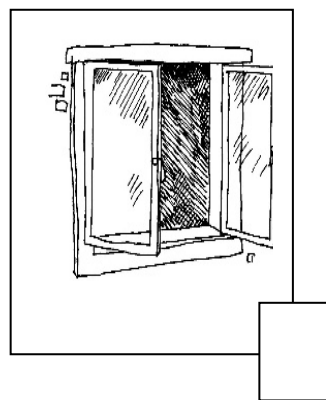
Metal

Concrete

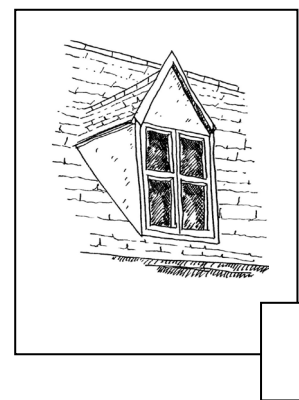
The size and shape of windows tells you a lot about the age and style of the building. What type of windows does Winsford Cottage Hospital have?



Sash

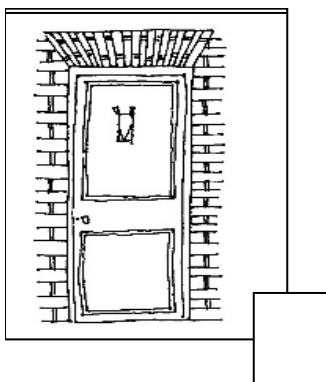


Casement (it opens)

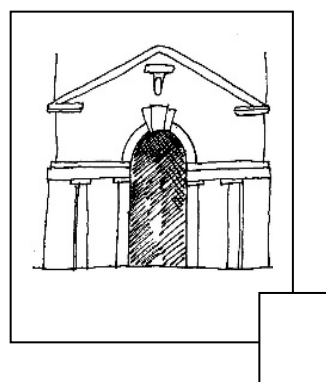


Dormer or attic (in the roof)

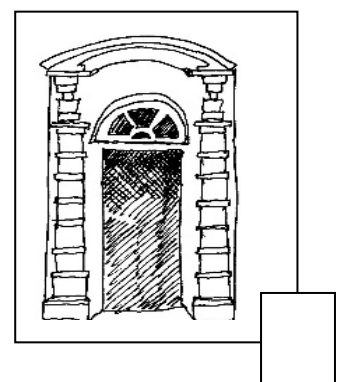
Entrances can be grand or simple. What is the front door of Winsford Cottage Hospital like?



Doorframe



Porch



Canopy

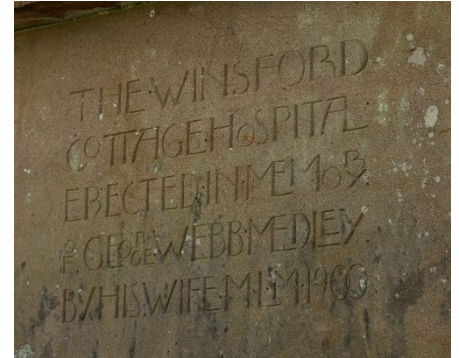
Quest

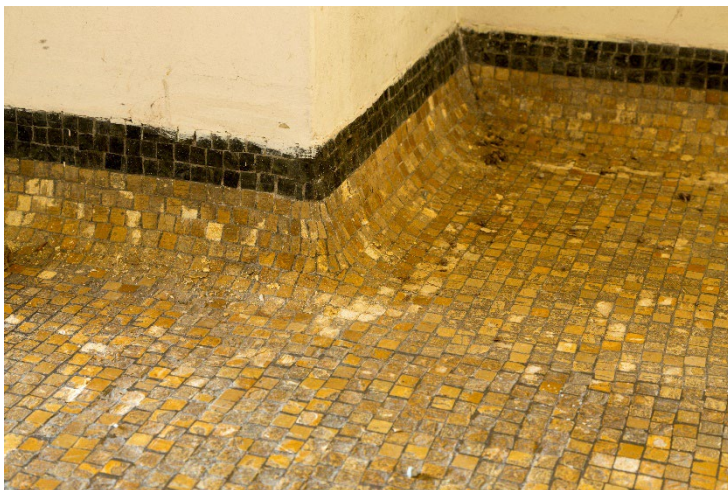


Discover more about Winsford Cottage Hospital

The hospital was built in 1899, that's over 120 years ago. Many things have changed inside and out in that time. Follow this Quest to discover more.

Find the date stone on the hospital – can you make out what it says? Copy it here using Voysey's funny capitals. Do you think someone didn't know how to spell "Medley"? See how the 'E' is squashed in?





Have you seen the amazing **mosaic** (say *mo-zay-ik*) floor that runs the length of the hospital? The gold tiles are a type of limestone and the black tiles are Connemara marble from Ireland. The floor is made of around 550,000 tesserae (or tiles) – wow, that's more than half a million!

When Landmark took on the building this floor was covered by cement and carpet – it took volunteers hours to uncover it!

Have a wonder around and look at the doors...

All the doors are wide and low – Voysey didn't like tall, thin doors. He said they were 'coffin-like' and unwelcoming. Amazingly almost all Voysey's original hinges and brackets remain. Not only was he a great architect, he was an amazing designer too. He designed furniture, fabrics and even wallpapers.

Have you found the bird and tree design vents?

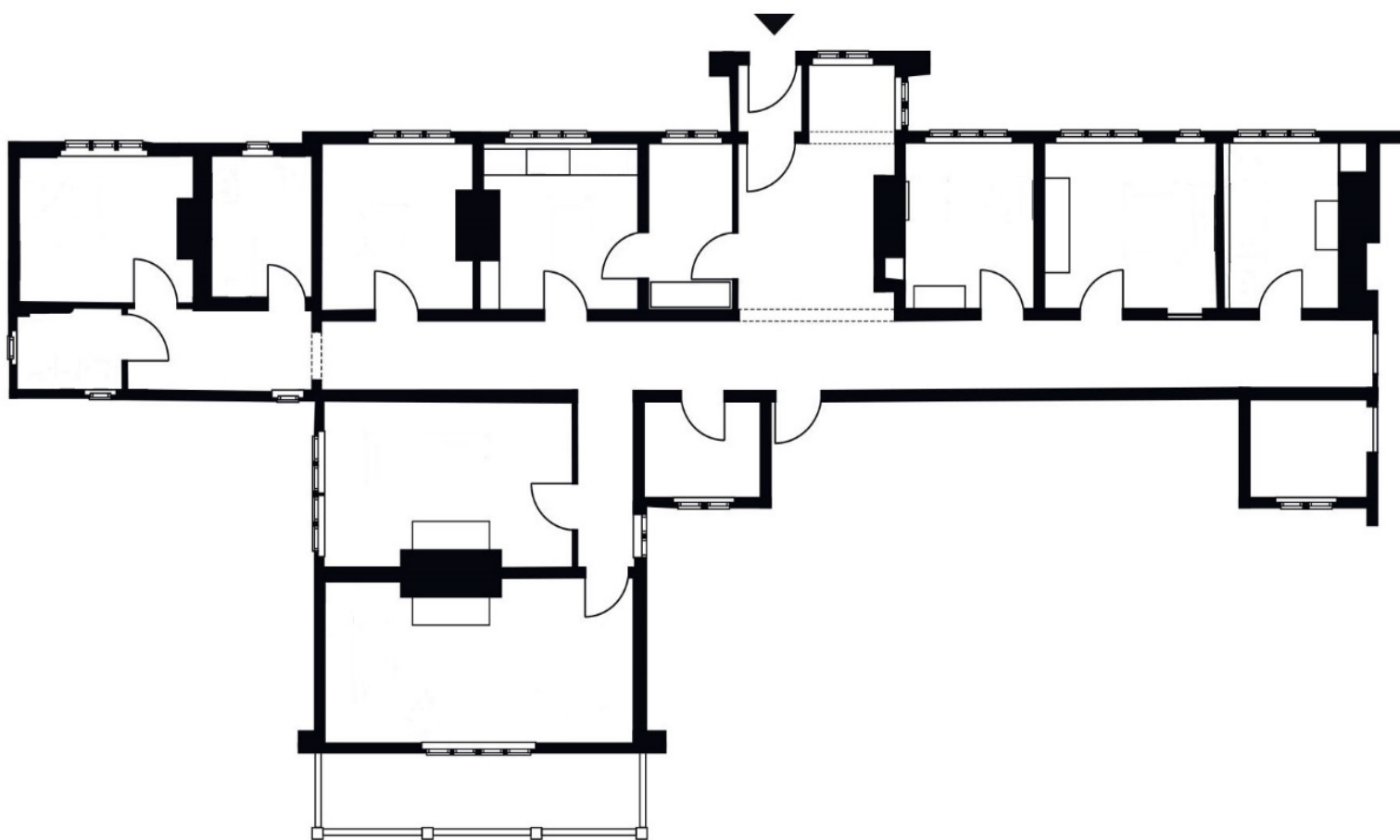


Can you design your own vent in the box above?



Living in Winsford Cottage Hospital

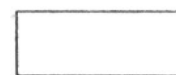
The floorplan of a building is a map of the rooms, the plan below show you the shape of each room on the ground floor. Take a walk around and write on the plan what each room is used for. Mark the bedroom you are sleeping in with a star.



We use these symbols to show where beds, tables and bathrooms are. Draw the symbols on to the floorplans to show where the furniture is.



Bed



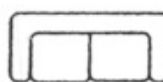
Rectangular (or a round) table



Bathroom



Cooker



Sofa



Kitchen sink



Can you find an example of each of these things inside Winsford Cottage Hospital. Describe, or draw the object when you find it.

Your favourite chair

A large empty rectangular box intended for drawing or describing a favourite chair.

The fireplace (is it an open fire or does it have a stove?) The elongated heart design is classic of Voysey.

A large empty rectangular box intended for drawing or describing a fireplace.

Draw the pattern of a rug on the floor

A large empty rectangular box intended for drawing the pattern of a rug.

In the box below, draw the view from the verandah. What can you see in the distance? Can you see any interesting buildings, or perhaps some animals grazing in the fields?

A large empty rectangular box intended for drawing a view from the verandah.



Can you answer these questions correctly?

1. What is the roof at Winsford Hospital made of?

Concrete

Thatch

Rubber

Slate

2. In what year was Winsford Hospital built?

1725

1899

2005

1992

3. How many tiles make up the mosaic floor in the main corridor?

1,000,000

40,000

550,000

872

4. How many hospitals did Charles Voysey design?

Twelve

Nine

Three

One

5. Which of these did Voysey not design?

Curtains

Houses

Boats

Furniture

6. What was the name of the Queen of England in the year when Winsford Hospital was built?

Victoria

Elizabeth

Isabelle

Lucy

7. In whose memory was Winsford Hospital built?

Maria Medley

Bob Medley

George Medley

Helena Medley

8. Soldiers were brought here with war injuries – which war were they fighting in?

Gulf War

WWII

Crimean War

The Great War/WWI

9. What is 'roughcast' made from?

Plaster and water

Bricks and mortar

Pebbles and cement

Cotton and thread

10. Which architectural style is Winsford Hospital built in?

Baroque

Modern

Gothic Revival

Arts and Crafts

To find the answers skip two pages...



Winsford Word Search

Now have a go at the Winsford Cottage Hospital word search. The words to find are at the bottom of the page.

L O S M E N A H D Z G S K P
V Y U Y O T O K Z E D R F E
V A C A E S A L H N A E E M
A I Q R P N A L C O T I C L
Y N E I O Y M I S T E D D U
N M T W E U C I C S S L E U
L A U S S H G O H H T O S N
L O Y U W C F H Z C O S I X
H O Y E L D E M C Y N Z G L
V I T I L E S G F A E V N K
H A D N A R E V L I S L T D
A R T S A N D C R A F T S M
R N G A L E N S H F X F W O
B J Z H E A R T S P R L E D

HOSPITAL
ROUGHCAST
VERANDAH
SLATE

CHIMNEYS
SOLDIERS
VOYSEY
ARTS AND CRAFTS

LATCHES
DATESTONE
MOSAIC
DESIGN

STONE
TILES
MEDLEY
VIEWS

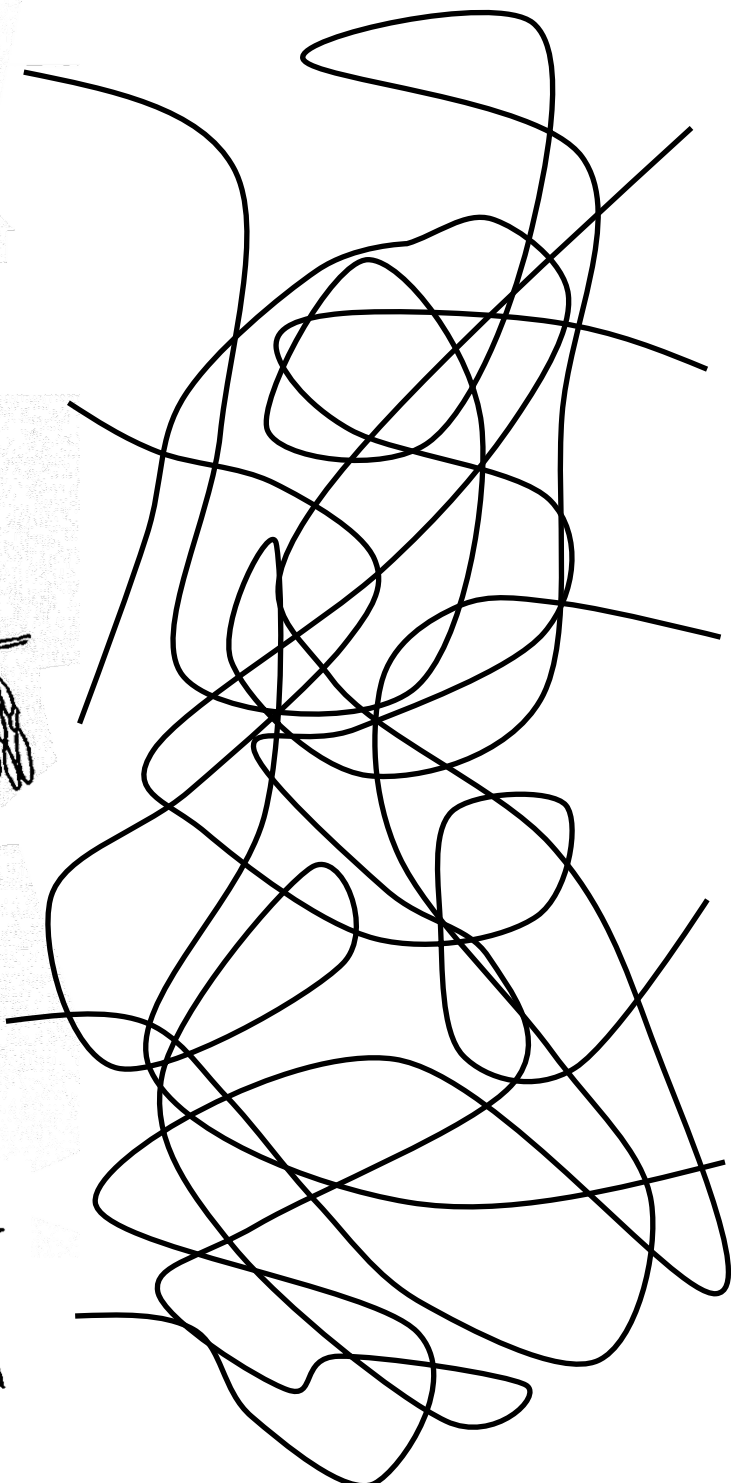
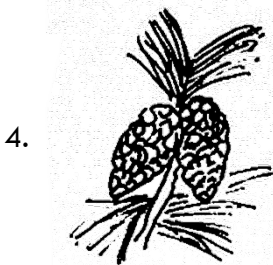
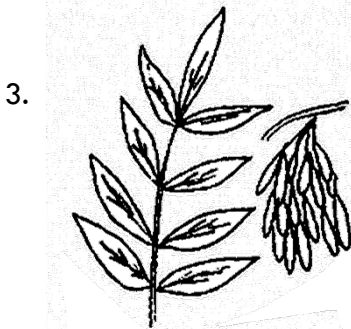
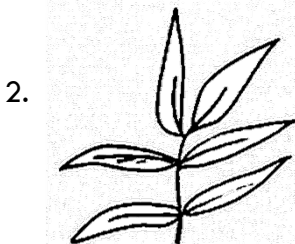
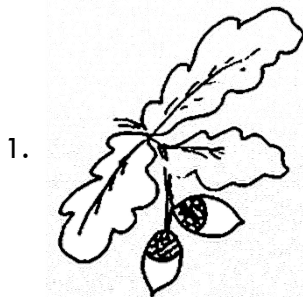
How many of these words did you find? Put your score in the box.

16



Which leaf belongs to which tree?

Match the leaf to the correct tree.



Horse Chestnut

Willow

Pine

Ash

Oak

Did you match them correctly? Put your score in the box.

Look out for these during your stay.



Answer sheet:

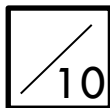
Quiz answers:

1. Slate
2. 1899
3. 550,000
4. One
5. Boats
6. Victoria
7. George Medley
8. The Great War/WWI
9. Pebbles and cement
10. Arts and Crafts

Fact:

The **Arts and Crafts** movement preferred quality over quantity and hand crafted items over mass produced.

How many did you get right?



Imagine you were a nurse who worked here 100 years ago. Write an acrostic poem describing life at Winsford Hospital. Each line has to begin with the letter shown, so that the lines spell 'Winsford'!

W _____

I _____

N _____

S _____

F _____

O _____

R _____

D _____

Design your own cottage hospital...

The design of Winsford Cottage Hospital was intended to make patients feel at home whilst they recovered from their various illnesses. Think about how you would like your hospital to look from the outside and what would make it welcoming.

Voysey included lots of different **motifs** (say *moh-teefs*) into his work; trees, birds and hearts being some of his favourites. What kind of motifs might you include to make people feel better?





Bake some scones

If you haven't ever had a scone you are missing out! Devon and Cornwall are famous for their scones. They are plain cakes that you cut in half and spread clotted cream and jam on each side. This is called a cream tea. Mmmm I could eat scones all day!

Here's a simple recipe for you to try. You might need the help of an adult.

75g of butter

1 large egg

225g of self-raising flour

2 tbsp milk

Pinch of salt

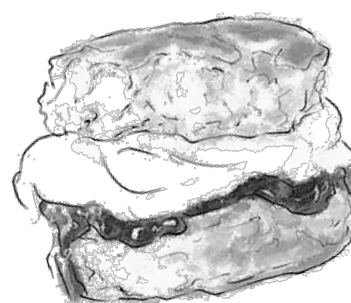
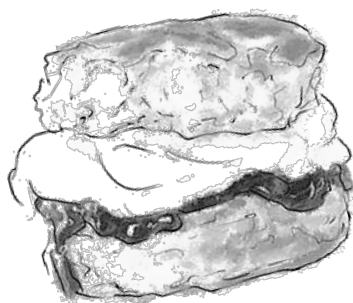
Clotted cream

40g caster sugar

Jam

Pre-heat the oven: fan 220 °C : 425 °F : Gas 7

- Grease a baking tray.
- Sift flour and salt into bowl. Rub butter into the mixture until it looks like breadcrumbs. Add the sugar.
- Beat the egg and buttermilk together in a separate bowl.
- Add the egg and milk mixture to the flour mixture. Mix it all together with a spoon and then with your hands. This is called dough (say 'doh').
- Put some flour on the work top and then put the ball of dough onto it.
- Roll the dough into a circle (about 2.5cm thick). Then cut out the scones (if you don't have a cutter use a glass, making sure it too gets flour on the rim).
- Put them onto the baking tray and brush them with milk. Bake on the top shelf for 10-12 minutes.
- Let them cool and then serve with lots of clotted cream and jam! Yum!





Designs by Voysey

As well as being an architect, Voysey was also a famous designer – he created furniture, wallpapers and fabrics. Below are a few of his wallpaper designs – can you spot the Cheshire Cat? Can you see how the patterns repeat because wallpaper is printed in rolls? Why not have a go at designing your own wallpaper in the box below. You can make them as colourful as you like and don't forget to make them repeat!



--	--	--	--

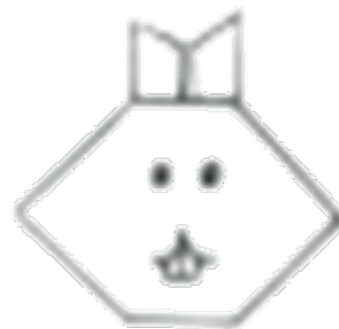


Make an origami rabbit

Have a go at making your own origami rabbit with the paper on the next sheet.

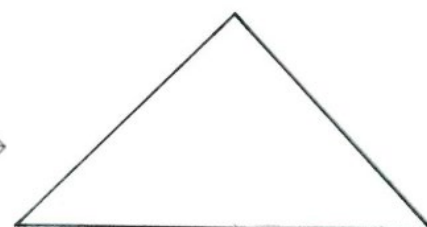
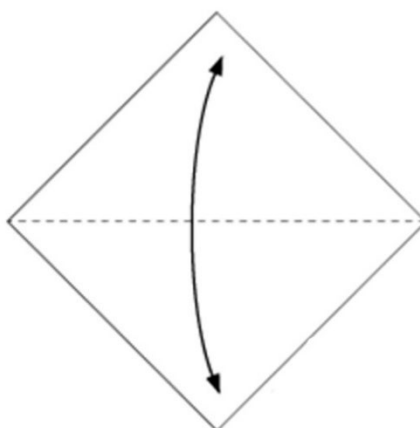
You will need:

- Paper
- Scissors
- Colouring pencils



Step One:

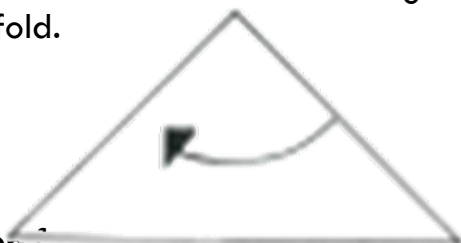
Cut the A4 piece of paper into a square. Follow the dotted lines on the sheet on the next page.



Then fold in half from top to bottom to make a triangle.

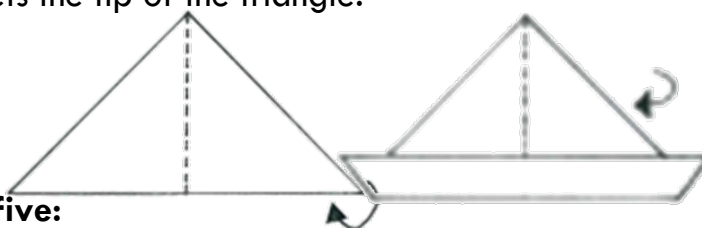
Step two:

Now fold the paper from right to left to make an even smaller triangle then unfold.



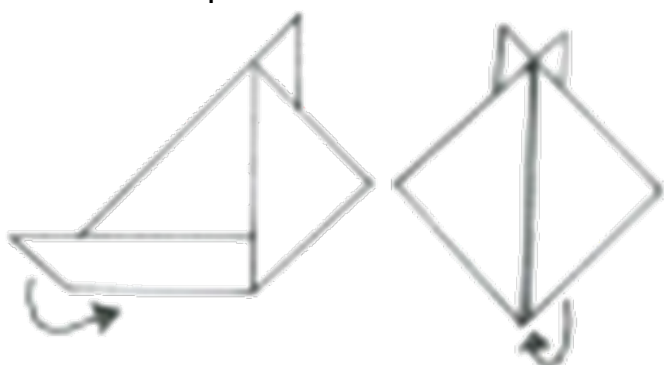
Step three:

Fold the bottom part of the paper up slightly. Then fold the right side so that the bottom edge meets the tip of the triangle.



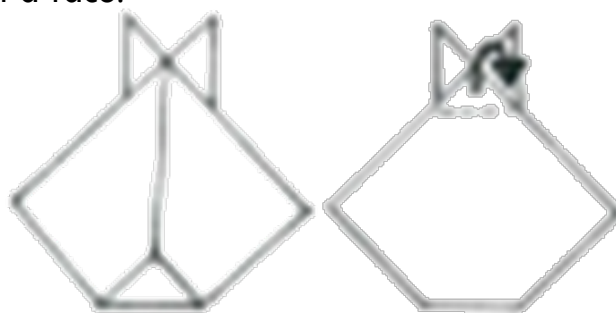
Step four:

Now fold in the left hand side, it should look like a diamond with two ears. Then fold a little bit of the bottom up to make the rabbits chin.



Step five:

turn the paper over and fold the top part of the paper away from you, tucking it in between. Now you have your rabbit you just need to colour it in and give it a face!



Cut out this box to make your origami rabbit...

