



## Find out about The White House's past...

Hello and welcome to The White House! My name is John Stedman. It's 1675, about 350 years ago for you. My dad's called Michael and my mum's called Margery. I'm ten years old.

How old are you?

---

My father is a **yeoman** (say *yow-muhn*) farmer and his family have lived here for ages. He built what you call an **extension** (say *ek-sten-shn*) onto the house, around about the same time as he married my mother. At the back of the house his extension looks black and white but at the front his extension has been hidden so you can't see it.



My dad, who owned The White House and farmed the land around it.

### Facts:

A **yeoman** is a small landowner; a farmer who owns his own land and looks after it himself.

An **extension** is part of a building that has been added onto the main bit at a later date. The White House has several extensions added it onto it through the years.

A **thimble** is a small cap worn to protect the finger and push the needle in whilst sewing.



We all have to work really hard out in the fields with my father and all the farm workers, especially me, because I'm the oldest.

As well as working hard, we always play lots of games here at The White House. Hide and seek, of course, inside the house- and outside the house too!

My brother, Will, likes to Hunt the **Thimble**. Have you played it? This is where we hide our mother's thimble somewhere in a room and then the rest of us have to find it. Try it – you don't have to use a thimble, any little object will do.



The Corvedale is the valley which we live in, the River Corve joins the River Teme in Ludlow. The best time of year in the Corvedale is harvest time.

Everyone helps each other to get the crops in safely. We celebrate with a delicious Harvest feast. I especially love my mother's apple scones- they're my favourite! Yum!

Perhaps you have a Harvest Festival at your school?

Our family have lived at The White House in Aston Munslow for years and years. I hope we keep on living here, it's such a beautiful place.



The front of The White House, the timber extension John's father built is hidden at the front.



You can see the timber extension John's father built at the back of the house.

## Fact:

John Stedman did live here all his life and so did his eldest son and their family.

In fact, the Stedmans lived at The White House for **over six hundred years!** A final extension was added onto the house, about a hundred years after the time John was writing to you.

Two hundred years after that, Miss Constance Purser moved here with her parents and she started a Museum of Buildings and Country Life here in The White House. Have a look in the History Room to find out more!

# Unruly Rulers

## Who were the Tudor and Stuart kings and queens?

This lot were a blood thirsty bunch, always chopping off heads. **Tudor** and **Stuart** are the family names of the kings and queens. The first Tudor was Henry VII in 1485 and they lasted till Elizabeth I. Then the Tudors' cousins, the Stuarts, ruled from James I to Anne.



### King Edward VI

Henry VIII's only son, he had some big shoes (and clothes) to fill! King at nine and dead at 16. Poor Eddie.

1509

### King Henry VIII

6 wives, only 1 son. Angry at the Pope horrible Henry made himself Head of the Church destroying all the Catholics churches.



1547

### Lady Jane Grey

Only 16 when she became Queen for just 9 days before Mary Tudor took the throne. Off with her head!



1553

### Queen Mary I

Back to Catholics again. Bloody Mary was her name, burning Protestants was her game.

1553

### Queen Elizabeth I

Good Queen Bess knew leaving religion alone was best. (Unless the Catholics attacked!) Had lots of boyfriends but married none.



1558

### King James I

What a silly king, he kept thinking witches were trying to kill him! He even wrote a book on witches.

1603

### King Charles I

Bad King Charlie wanted to rule without Parliament. That started a civil war which he lost. Onto the block went Charlie's head. One chop and he was dead.



1625

### Oliver Cromwell

Not a king but still a ruler. He didn't like the royals and made himself Lord Protector of England. He didn't last too long.

1649

### King Charles II

A merry monarch who brought back fun and games Oliver had banned!



1660

### King James II

A bit dim was this king. He tried to make everyone Catholic again, then ran away when they said no.

1685

### Queen Mary II & William III

She and her husband took her dad, James II's throne in the Glorious Revolution. Not so glorious for James.



1688

### Queen Anne

A sickly queen who loved to eat!

1702-1714





# Meet Queen Elizabeth I

– who ruled when John lived at The White House.



**Hi Lizzie!**

**So when did you become queen?**

I became Queen on 17 September 1553 when I was 25.

**What are you most famous for?**

I defeated the Spanish army who tried to invade England. How dare they?

**What is your favourite thing to do?**

I loved having a bath and being clean, I have 4 baths every year! I was the cleanest woman in England. And I LOVE sweets.

**What is the naughtiest thing you've ever done?**

I pretended to be a Catholic when my half-sister bloody Mary was queen; once she was dead I turned England Protestant again!



## What does The White House look like?

Can you walk all the way around it?

Castle

Tall

Can you use any of these words to describe the building?

Farmhouse

Pretty

Draw a circle around the ones that do.

Stone

Brick

What do you like most about The White House?

Symmetrical

Home

Square

Elegant

Friendly

Tower

The different parts of The White House are made of different materials. The oldest parts, the kitchen and History Room, are made from stone that is quarried from the ground. In Tudor times, stone was taken out of the ground by hand; nowadays it's blasted out with explosives!

Michael Stedman's **extension** is timber framed. Timber-framed buildings were cheap to build but they also caught fire really easily too which is why buildings with wooden frames are quite rare these days.



Look closely at this picture. Can you see the wooden pegs that have been used to join the timber frame together? This was a common building technique in medieval times – they didn't have the same tools we have now.

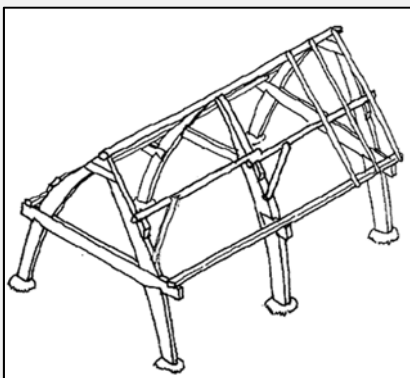


## What is Michael Stedman's extension built from?

### Fact:

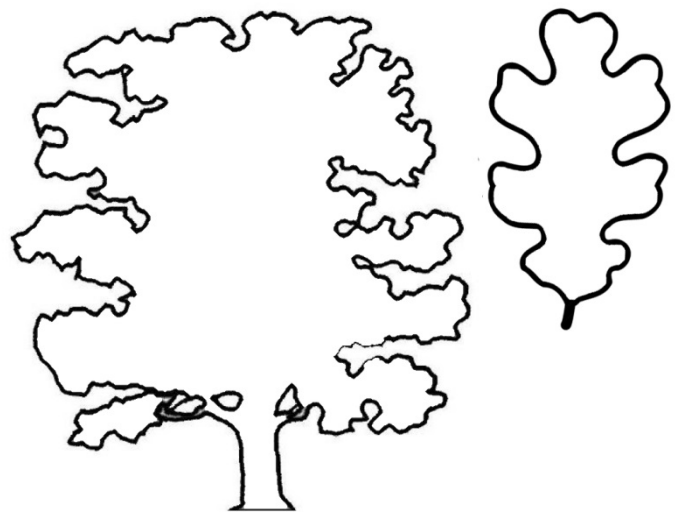
The simplest house frame was a Cruck. A curved tree was cut in two pieces along its length. You needed one cruck at each end of the building and one in the middle. This created your frame, which you then added to and filled in with mud walls and a straw thatched roof.

A Cruck frame was quick to build but it didn't have much room upstairs. There is a Cruck frame in the oldest part of The White House.



The extension which Michael Stedman added on to The White House is built with a wooden frame; timber is wood used for building. Today buildings with wooden frames are quite rare. Most were pulled down to make way for more modern buildings.

The timber from oak trees is the best for building with because it is very hard. Oak is a common tree in Britain, and it was grown specially to supply timber for building Oak trees They look like this, and they have wiggly leaves and acorns in the autumn.



Can you find any oak trees in the garden here?

Over time, timber framed houses started to look more like boxes, with a triangle for the roof. People wanted to have proper rooms upstairs.

Turn the page to find out more about how we can tell how old a wooden beam is.

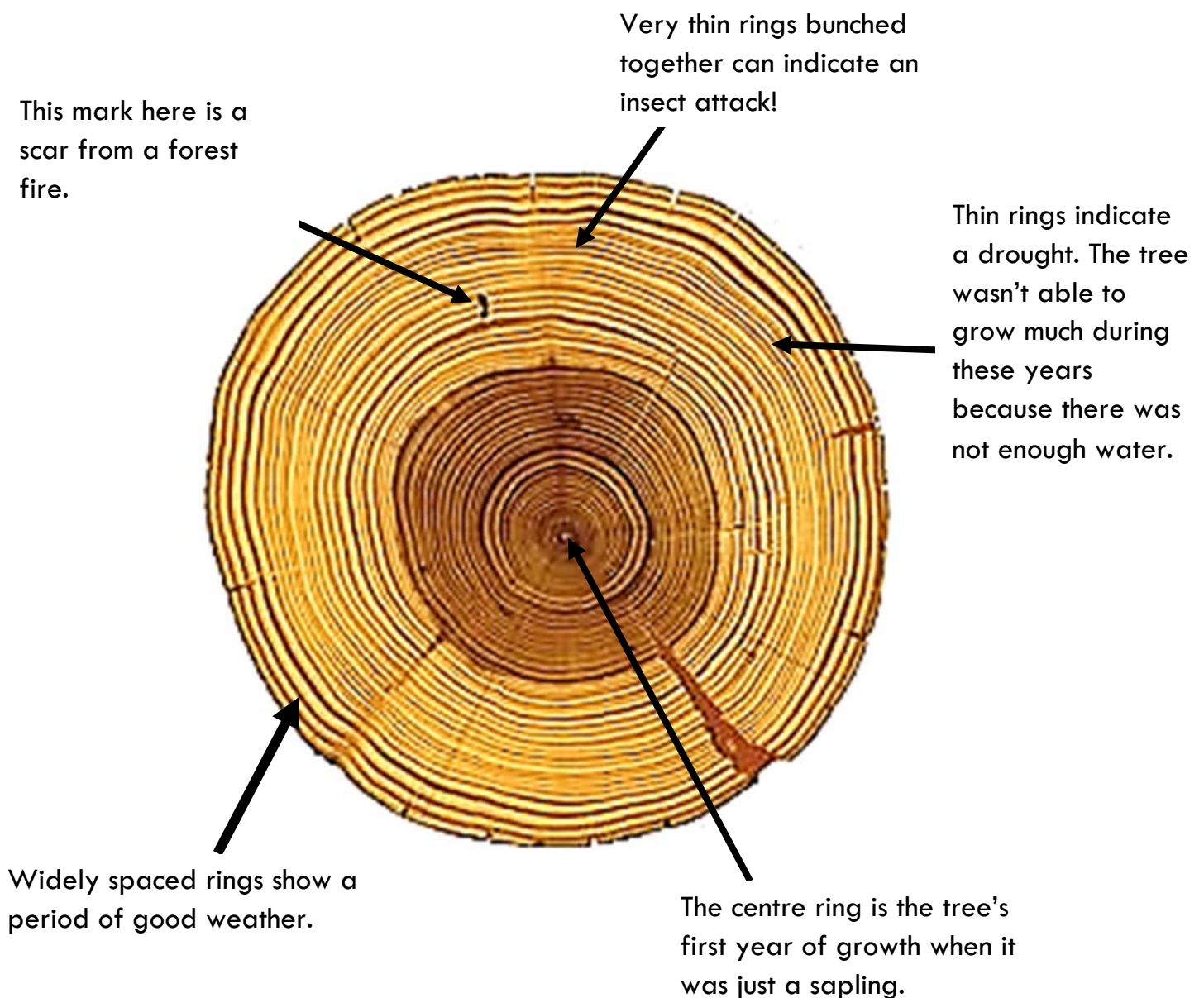


## Dendrochronology: What is it and why is it important?

**Dendrochronology** is the science of dating something by the wood it's made of. Normally you count the growth rings in timber and tree trunks. Each ring is a year in growth: in wet years the tree grows faster than in dry years.

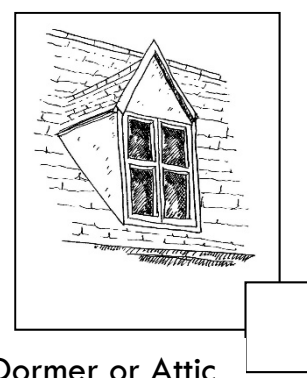
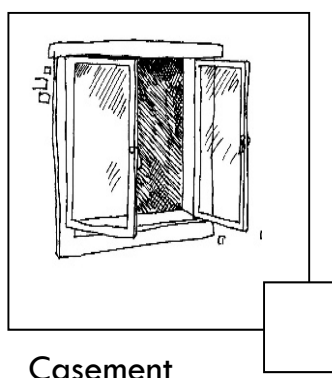
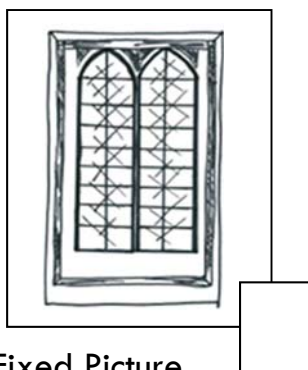
Have you ever counted the rings on a branch or tree stump to see how old the tree was? It's the same technique!

Looking at a cross-section of a tree can teach us a lot about what was happening in the environment around it at certain times.





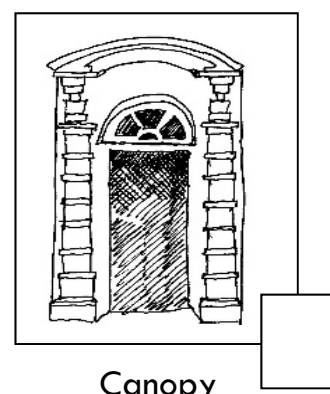
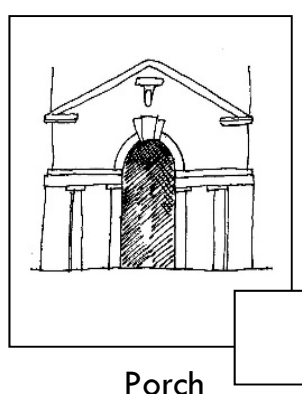
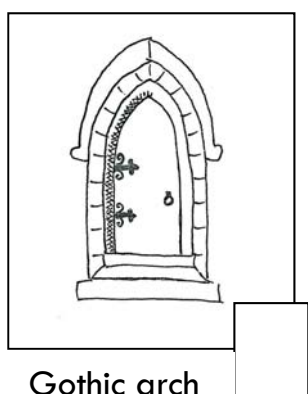
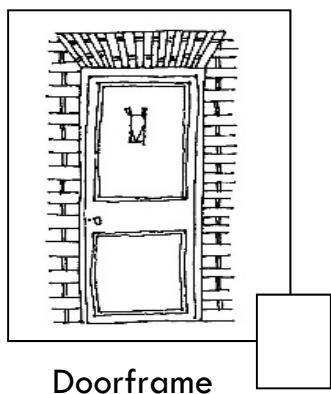
The size and shape of windows tells you a lot about the age and style of the building. What type of windows does The White House have?



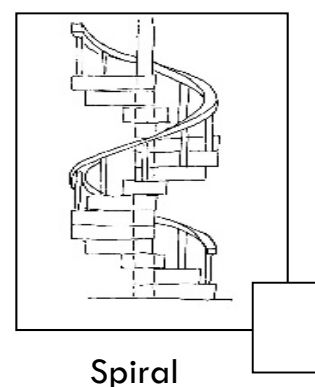
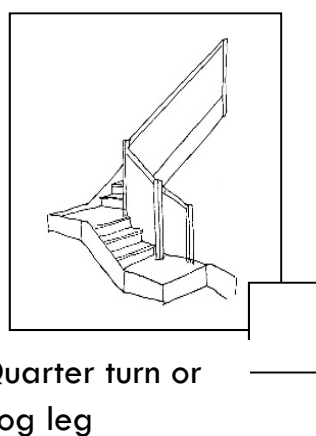
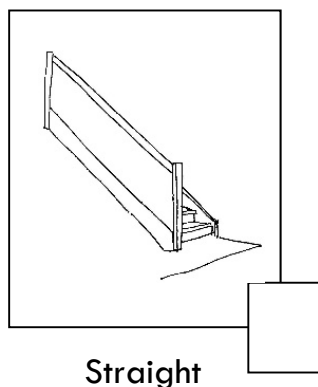
**Fact:**

Have you seen that in some very old buildings the windows don't open? Imagine how hot it got in the summer! When the casement window was invented it was the first type of window to open.

Entrances can be grand or simple. What is the front door at The White House like?



There are many different styles of staircases. There are two staircases at The White House. Which styles are closest to the staircases at The White House?



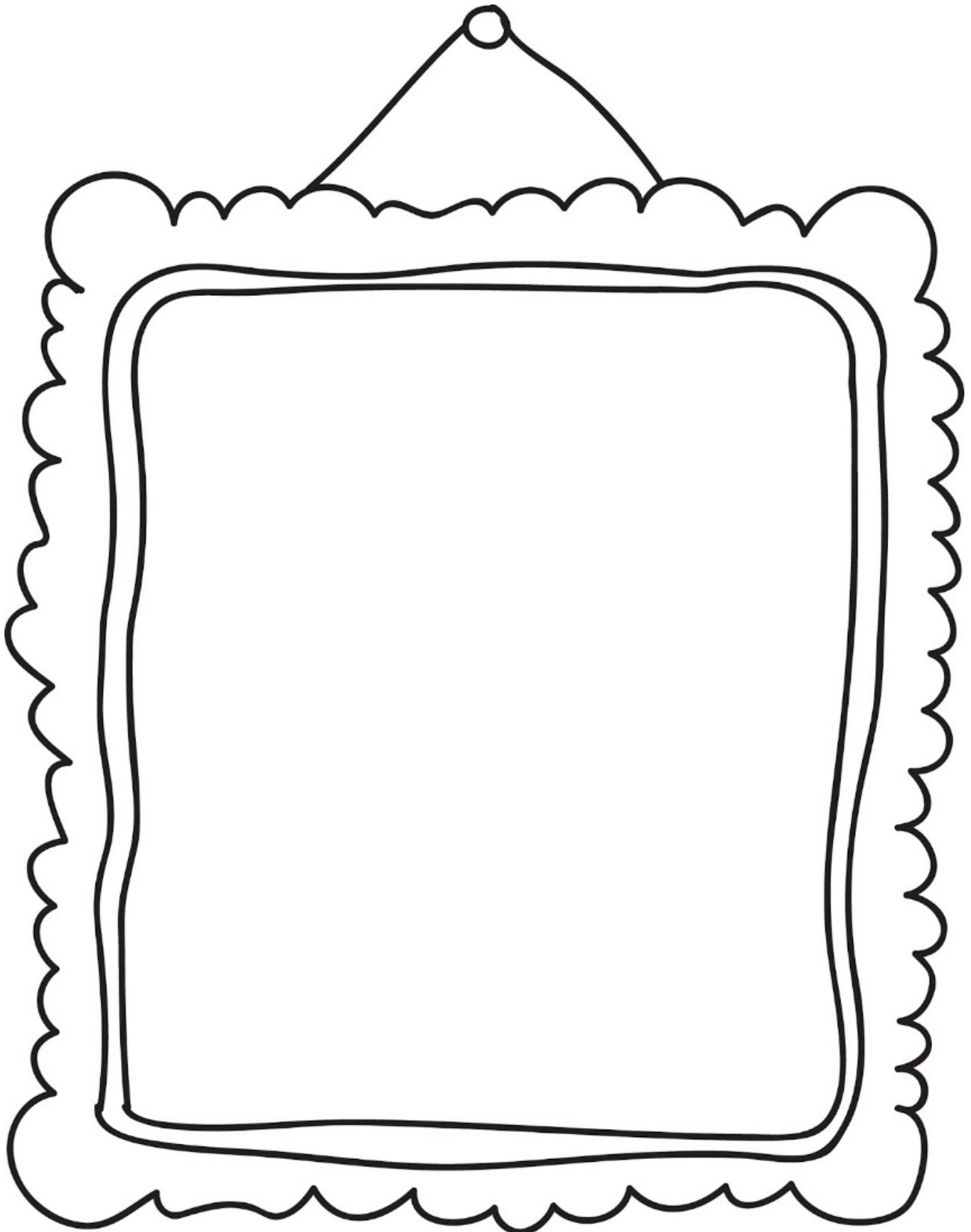




Buildings are quite easy to draw. They are usually made up of lots of geometric shapes, like squares, triangles and circles.

**Have a go at drawing the front or the back of The White House.**

Please tell an adult where you are going so they don't worry about where you are!





# Quest



## Discover more about The White House

Parts of The White House have been here for over 700 years; other parts or extensions have been added on over the years. Follow this Quest to discover more about it.

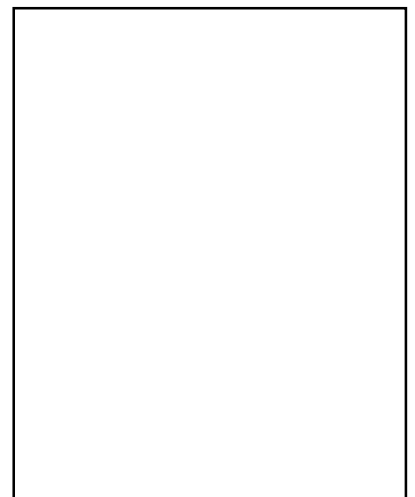
Go into the garden and find the stone structure with little holes in it. Do you know what it is? It's a 'dovecote' – which is a kind of house for birds. Do you know what kind of birds?

It's designed to house doves or pigeons. Two doves in each hole would have a safe space to make their nest. The dovecote used to be a large cylinder, shaped like a tin can, but with a pointed roof. The roof came off long ago and you can see that most of the walls have fallen down but it is really old. We think it was built in the 13<sup>th</sup> century, that's over seven hundred years old - much older than the front of The White House, which was built in the Georgian period – that's the 1700s.

If you like a challenge, look around the grounds of The White House to see if you can find another dovecote.

(Clue- It isn't a free standing structure; it's built into the wall of a building.)

(Clue Two- look up!)



### Can you find this spiral?

It's the curl at the bottom of the bannisters on the west set of stairs in the Georgian part of the house.

There is another set of stairs at the east end of the house by the kitchen. These stairs are much older; they were put in in the 1600s.

Go around the whole building and count how many steps there are. Remember to include both staircases and the steps on the First Floor passageway.

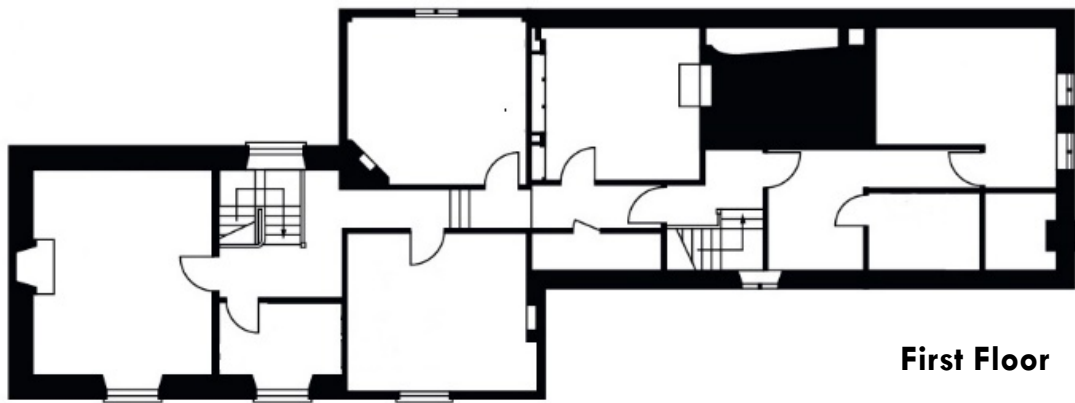
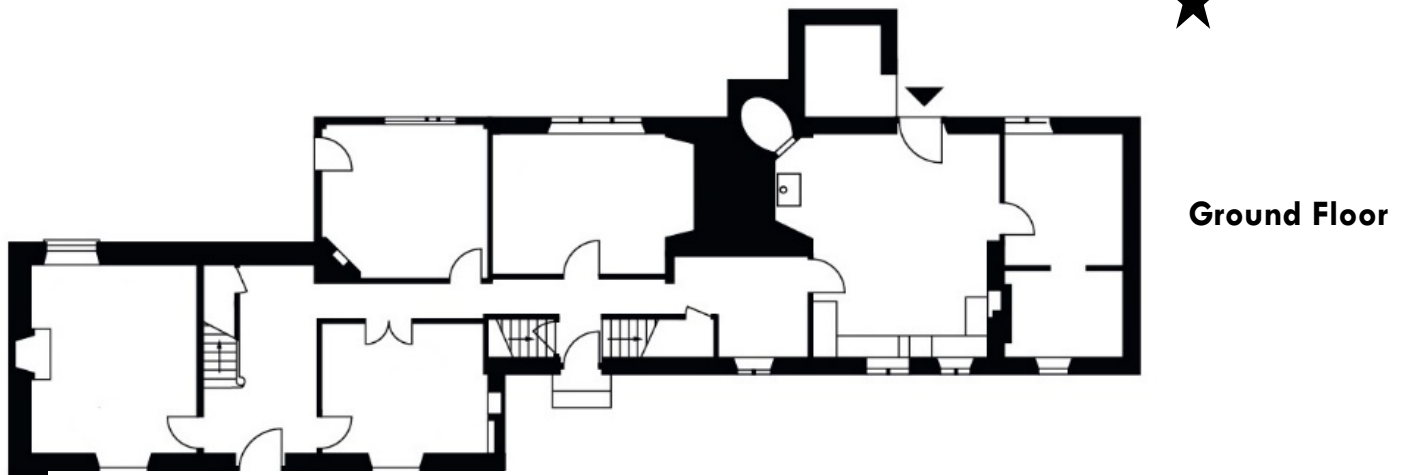
Try using tally marks (like this |||) in the box above to show how many you counted.





# Living at The White House

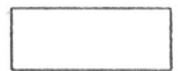
The floorplan of a building is a map of the rooms inside the building, the plans below show you the shape of each room. Take a walk around each floor. Can you identify the rooms and write on the plan how they are used today? Mark the bedroom you are sleeping in with a star. ★



We use these symbols to show where beds, tables and bathrooms are. Add the symbols on to the floorplans to show where the furniture is today on each floor.



Bed



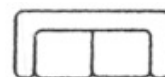
Rectangular (or a round) table



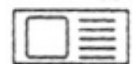
Toilet



Cooker



Sofa



Sink



Can you find an example of each of these things inside The White House. Describe, or draw the object when you find it.

Your favourite piece of furniture

Your favourite window

Draw the pattern of a rug on the floor

In the box below, why not draw the view from your bedroom window – what can you see?

A large, empty rectangular box with a black border, intended for drawing a view from a bedroom window.





## The White House Word Search

Now have a go at the word search. The words to find are at the bottom of the page. They may be positioned diagonally, vertically or horizontally. Check forwards and backwards!

N	A	E	B	O	C	A	J	F	L	Q	E	T
D	A	I	R	Y	A	I	T	A	P	N	I	U
A	E	M	S	R	I	A	T	S	O	M	S	D
S	N	T	D	L	R	G	O	T	B	T	E	O
T	E	K	Z	E	L	F	S	E	R	E	T	R
O	K	I	C	E	T	I	R	I	E	S	S	E
N	C	T	Y	Z	A	S	T	A	B	L	E	L
M	U	C	H	W	E	N	L	O	C	K	N	A
U	R	H	E	T	O	C	E	V	O	D	N	D
N	C	E	H	O	P	U	G	S	I	X	E	E
S	O	N	L	U	D	L	O	W	T	Y	D	V
L	A	V	E	I	D	E	M	M	R	R	R	R
O	R	E	S	R	U	P	S	S	I	M	A	O
W	E	N	L	O	C	K	E	D	G	E	G	C

STAIRS

DAIRY

GARDEN

ASTON MUNSLOW

STONE

CART

STEDMAN

WENLOCK EDGE

TIMBER

KITCHEN

DOVECOTE

MUCH WENLOCK

CRUCK

STABLE

JACOBAN

MISS PURSER

TUDOR

LUDLOW

MEDIEVAL

CORVEDALE



## Can you answer these questions correctly?

You'll need to read all the sections first! Then skip a page to find the answers!

### 1. Who was on the throne when John lived here?

(Psst... check unruly rulers)

Elizabeth I

James I

Henry IV

Victoria

---

### 2. What's the name of the village that The White House is in?

Aston Munslow

Munslow

Diddlebury

Hungerford

---

### 3. What is a dovecote?

Part of the sea  
where dolphins live

A body of water to  
keep fish in,  
especially trout

A building, or part of  
a building, to house  
pigeons or doves

A big enclosure  
designed to provide  
the right habitat

---

### 4. What is the name of the river that runs through the Corvedale?

River Corve

River Severn

River Teme

River Onny

---

### 5. How long did the Stedman family live at The White House?

6 years

160 years

60 years

Over 600 years

---

### 6. Which county is The White House in?

Herefordshire

Shropshire

Cheshire

Flintshire

---

### 7. What was the name of the owner of The White House who set up the Museum of Buildings and Country Life in 1966?

Charlotte Stedman

Charles Price

Constance Purser

Charles Dickens

---

### 8. What is Elizabeth I most famous for? (Psst... check unruly rulers again)

Beheading her  
husband

Defeating the Spanish  
army who tried to  
invade England

Eating the most  
doughnuts in five  
minutes

Giving up the throne

---





## Answer sheet:

### Question & Answer:

1. Elizabeth I
2. Aston Munslow
3. A building, or part of a building,  
to house pigeons or doves
4. River Corve
5. Over 600 years
6. Shropshire
7. Constance Purser
8. Defeating the Spanish army who  
tried to invade England

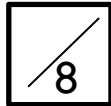
### Did you know?

In England, we can trace the creation of dovecotes back to the Norman period (1066-1154\_ - that's over 850 years ago!

Doves and pigeons provided food as well as feathers for the estate and their poo was even used as manure for the gardens.

They are also known as 'culverhouses' (English), 'columbaria' (Latin) and 'doocots' (Scots).

How many did you get right?



Can you think of some quiz questions to ask your family and friends?

Write them down here:

1.

2.

3.

4.

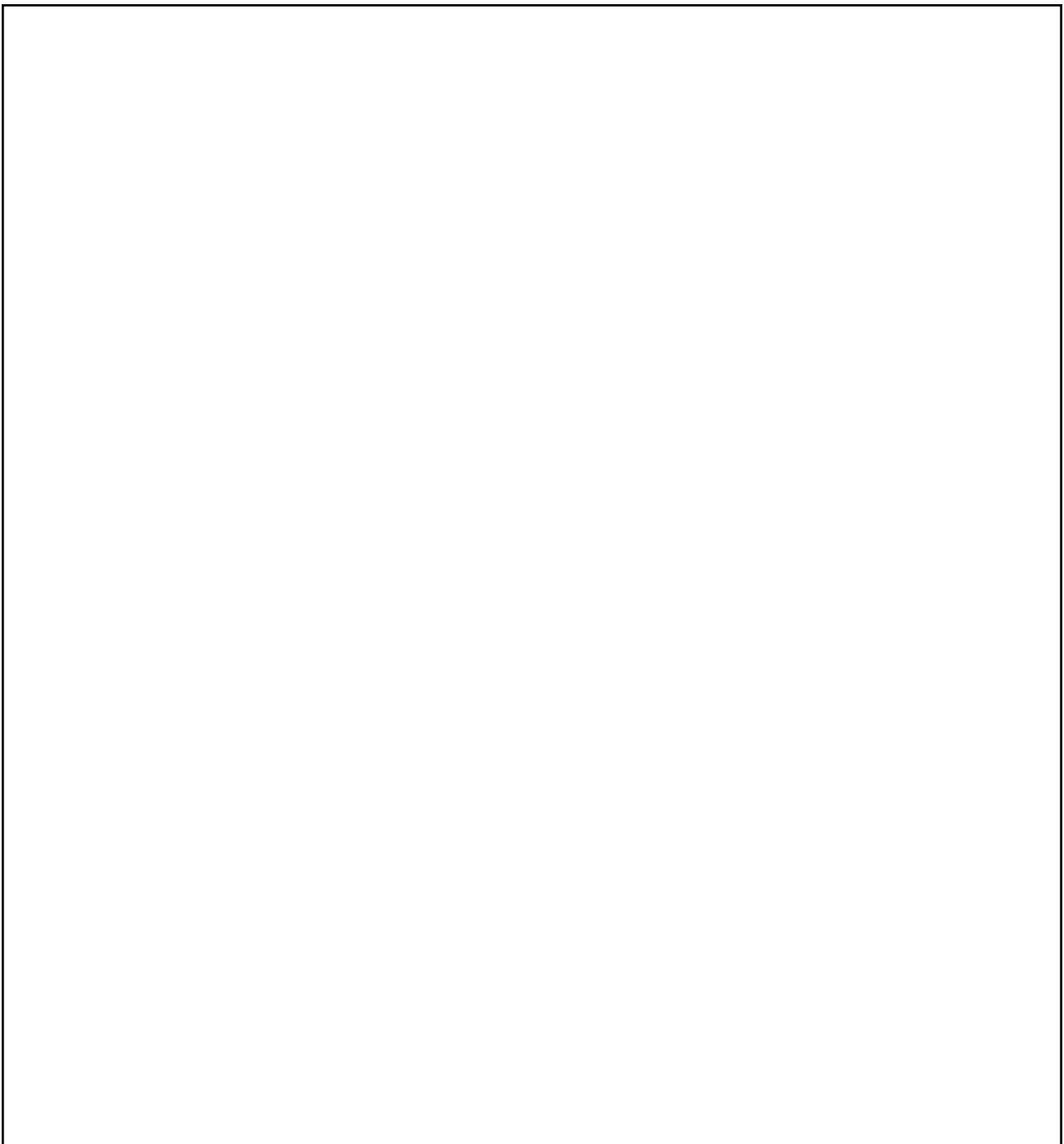
5.



## Design your own White House

The White House here in Aston Munslow is mostly white. There is another very famous White House in America where the President of the United States lives in Washington.

Imagine that you were going to build a White House for you and your family to live in. What would it be like? Make it wacky if you like - add an escalator, or maybe a swing! Make sure you've drawn enough bedrooms for all your friends and family to stay with you.





## Farmhouse apple scones

Here's a simple recipe for you to try. You might need the help of an adult.

50g cold butter, plus 1 tablespoon	25g caster sugar
1 large eating apple	125ml and 1 tbsp milk
1/2 tsp ground cinnamon	1 tbsp sugar for sprinkling
250g self-raising flour, plus some for dusting	

Preheat the oven to gas: 7, fan: 200°C

1. Core the apple and cut into chunks. Cut the butter into chunks
2. Melt 1 tbsp butter in a small frying pan
3. Add the apple and cook for 5 minutes, stirring until the apple starts to soften
4. Sprinkle in the cinnamon and cook for 2 minutes until lightly golden then set aside
5. Mix the flour, sugar and pinch of salt together in a bowl
6. Add the remaining butter and mix until the mixture looks like breadcrumbs
7. Pour in the milk and mix it all together
8. Dust the surface with flour and put the mixture onto it. Knead (say 'need') the apple mixture into the main mixture
9. Using a floured rolling pin lightly roll out the dough to a circle about 15cm wide
10. Put on a baking sheet. Use a knife to lightly mark the top into 8 wedges
11. Brush with milk and sprinkle over the sugar
12. Bake for 25-30 minutes until lightly golden, then put on the side to cool.



Enjoy!





**Colour in this pheasant. Use the Bird book on the bookshelf to find out and copy the colours of the pheasant's feathers.**

