

# History



## Find out about Elton House's past...

Hello! Welcome to Elton House. My name is Ann and I visited Elton house with my sister and mother in 1720. Mother wasn't very well so we came to Bath for a month so she could take the waters. That means sit in the special roman baths! Sometimes she let my sister Elizabeth and I go with her, the water was nice and warm -not like swimming in the river or sea!

Apparently the water comes from a very special spring underground and will keep us strong and healthy, just like the Romans hundreds of years ago. Once Elizabeth and I got in lots of trouble as we were splashing each other and accidently splashed a lady near us. She was very angry and told us no girls should behave like that. Whoops! Draw a picture of Elizabeth and I playing in the Roman Baths in the box above.

### Fact:

In Georgian times, Bath was the most fashionable town in England. People came to bathe in the baths the Romans built as they believed the water had healing powers. Afterwards, they drank it in the Pump Room next to the spa. You should try it too!

The 'Bath Season' was a very popular time of year when all the gentry rented houses and rooms in Bath. They went to fancy balls, showed off their new clothes and went to lots of parties. Lots of marriages were arranged during the seasons – must have been all that dancing!



Every morning my sister Elizabeth and I practiced our embroidery, piano and singing. I loved singing the most, I could sing all day if I was allowed! My favourite song was The Raggle Taggle Gypsy. Imagine how much fun it'd be to travel around the country like a gypsy!

What's your favourite song?

.....  
.....



In the afternoon we'd go shopping, visit friends for afternoon tea or get to play. I loved it when we went shopping and I was allowed to choose a new ribbon for my bonnet. If we were lucky mother took us out in the carriage for a ride in the countryside. I loved this most, especially when we got out and went exploring in the woods. I once saw a family of bunny rabbits all hopping along; I wish I was allowed to have a bunny rabbit.

What's your favourite animal?

.....



# Unruly Rulers

## Who were the Georgians?

The **Georgians** were nobles from Germany. George I was King James I's great grandson. So when Queen Anne died with no heirs George became king. They are called **Georgians** because they are all called George (apart from William – but he wasn't meant to be king anyway!) Their surname was **Hanover** so this time is also called the **Hanoverian** (say 'han-o-ver-ee-an') period.



### King George II

A boring king who only liked to fight battles. He died on the toilet of constipation, pooh!

1714

### King George I

A king from Germany who couldn't speak much English. He kept his wife in prison for 32 years - how mean!



1727

1760

### King George III

A popular king who went mad. He started talking to an oak tree in Windsor thinking it was Frederick the Great! Poor Georgie, he had to stop ruling as he was so mad.



George III's son George IV had to step in and rule as Prince Regent. This was called the **Regency Period**.



### King George IV

A bad king who ruined all his dad's hard work. He loved to drink, eat and party!

1820

1830

### King William IV

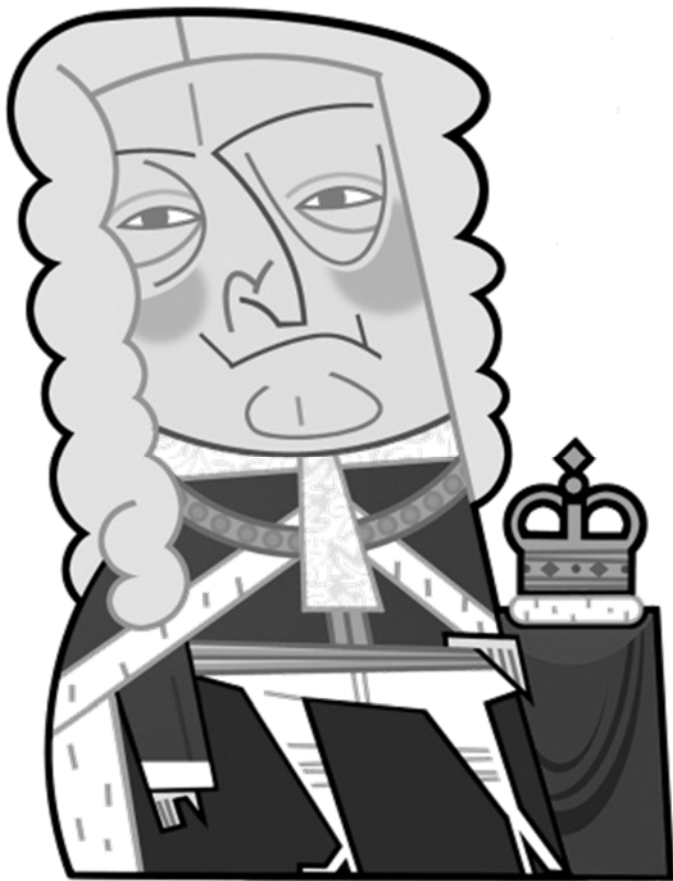
A simple king who wanted to be a sailor but was too stupid to command a ship. He would sometimes offer people a lift in his carriage!





# Meet King George II

– who ruled when Ann visited Elton House



**Hi Georgie!**

**So when did you become king?**

I became King on 11 June 1727 when I was 44.

**What are you most famous for?**

I was the last British King to lead an army into battle (of course we won!)

**What is your favourite thing to do?**

I can't choose – I love stag-hunting and playing cards after dinner!

**What is the naughtiest thing you've ever done?**

I once tried to swim the castle moat to see my mother who had been put in prison by my dad.

# Design



## What does Elton House look like?

Can you walk all the way around it?

Can you use any of these words to describe the building?  
Draw a circle around the ones that do.

Does Elton House look like other buildings in the area?

Castle

Tall

Pretty

Industrial

Stone

Brick

Symmetrical

Home

Square

Elegant

Elton House was built by Edward Marchant in 1699. It originally had three floors and a big basement that was the kitchen. Around 1710 the owners made the house bigger, extending into the garden. This meant that they could rent rooms to people who were visiting Bath. In Georgian times Bath was a popular place for all the rich people who lived in the countryside to meet. They'd have big parties, bathe in the Roman baths and try to marry their children off into other rich families.

Look at the map below – draw Elton House onto the map.





Sometimes stone masons carved faces and animals called gargoyles. You often find these in churches, up near the roof. When you walk past the Abbey have a good look– who can you see? Below are some examples of what they might look like. Have a go at designing your own gargoyle. Make it as ugly as you like!





## What is Elton House built from?

### Fact:

Some buildings were built from stone that was dug out of the ground when farmers ploughed the fields, other buildings were made from stone that was quarried and cut into neat shapes and sizes. There are still many stone quarries around the country today, where people get stone out of the ground.

Stone houses were once cheaper to build than brick ones. Once we could transport bricks up and down the country on the canals and railways, brick buildings became cheaper and more popular.

Stone is the solid foundation of the earth. It exists as huge mountains, rocks, stones or small pebbles washed smooth by water. There are lots of different types of stone, with different colours and textures. Some are better to build with than others.



In medieval and Tudor times, stone was still taken out of the ground by hand. Today, a quarry is a place where stone is blasted out of the ground with explosives! The one in the picture shows what quarries look like now.



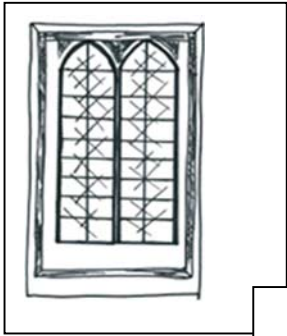
People who work with stone are called stonemasons. They build walls, carve the stone into shapes or add patterns to its surface. They use a mallet and special tools called chisels to shape the stone. The picture on the right shows a stonemason carving stone.



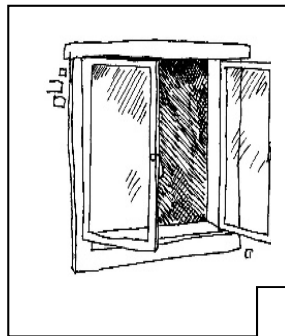




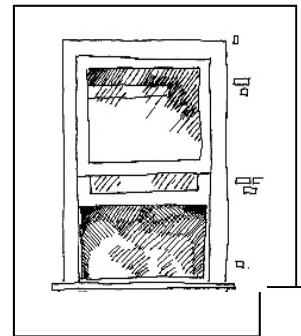
The size and shape of windows tells you a lot about the age and style of the building. What type of windows does Elton House have?



Fixed Picture



Casement

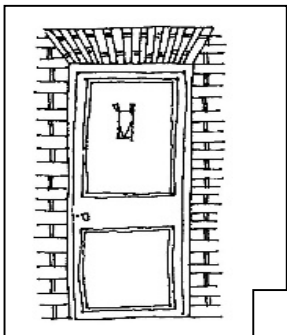


Sash

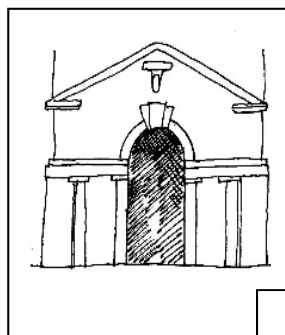
**Fact:**

Have you noticed how big the windows are at Elton House? At this time they had just learned how to make big panes of glass so rich people used them as much as possible.

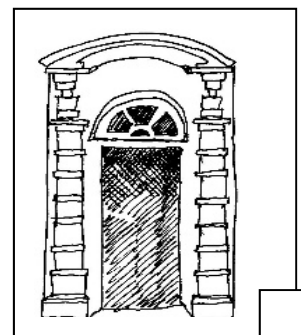
Entrances can be grand or simple. Which of these is most like the front door of Elton House?



Doorframe

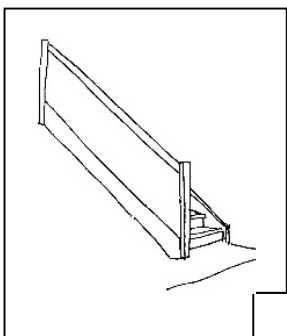


Porch

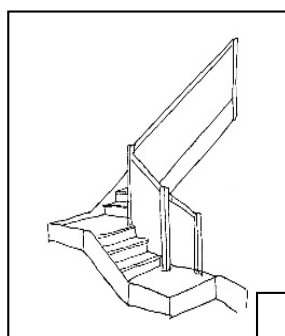


Canopy

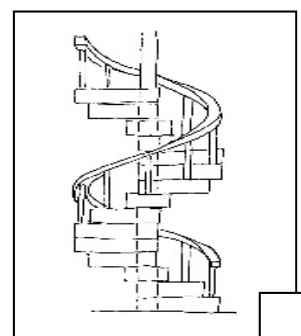
There are many different styles of staircases. Which style is closest to the staircase at Elton House?



Straight



Quarter turn



Spiral



# Quest



## Discover more about Elton House

The city of Bath has been important since ancient times. People travelled from all over to visit the healing hot water spring. The more popular it became the more houses were built. Follow this Quest to discover more about Elton House.

**Can you find 'Elton House' carved into the stone on the front of the house?**



**Can you find these tiles? What room are they in?**

.....



**Can you find this?**

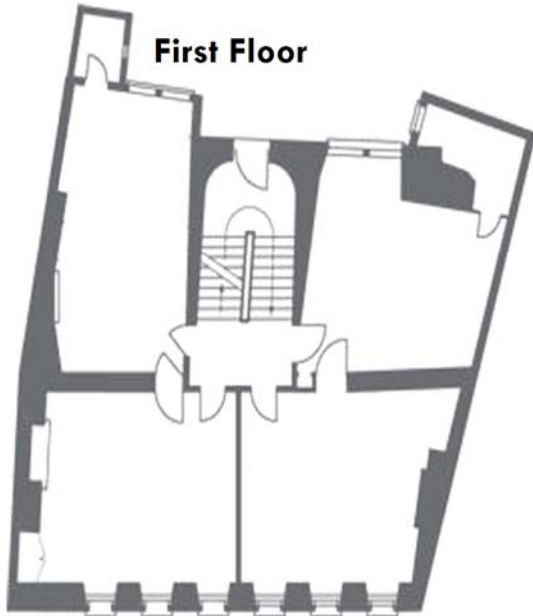


**Have you found anything else interesting on your quest? Write about it below and draw a picture of it in the box.**

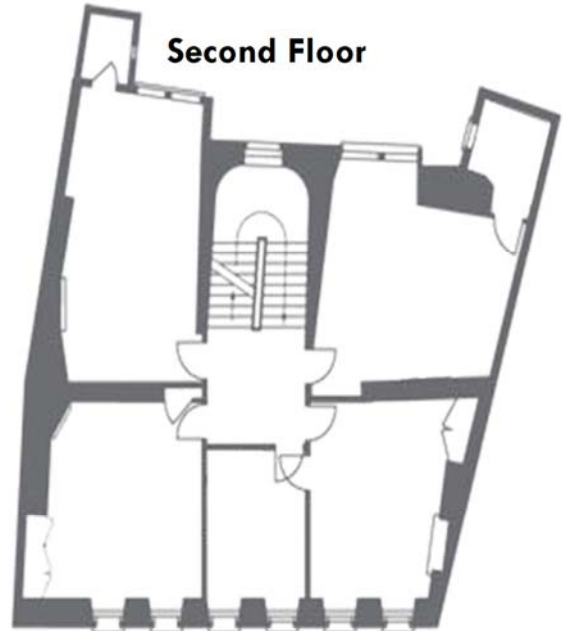


## Living in Elton House

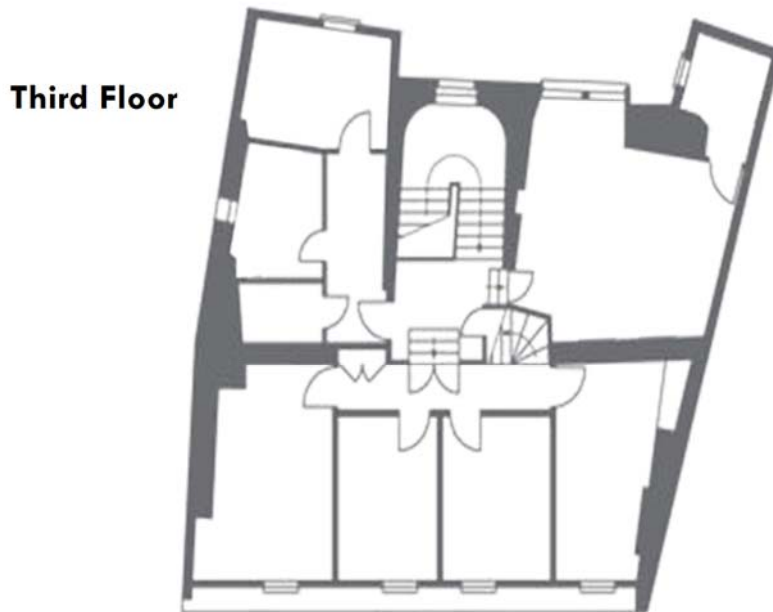
The floorplan of a building is a map of the rooms. The plans below show you the shape of each room on the first, second and third floors. Take a walk around and write on the plan what each room is used for.



First Floor



Second Floor

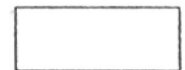


Third Floor

We use these symbols to show where beds, tables and bathrooms are. Draw the symbols on to the floorplans to show where the furniture is.



Bed



Rectangular (or a round) table



Bathroom



Cooker



Sofa



Kitchen sink



Can you find an example of each of these things inside Elton House. Describe, or draw the object when you find it.

Your favourite chair

The fireplace (is it an open fire or does it have a stove?)

Draw the pattern of a rug on the floor

In the box below, draw the view from your favourite window. What can you see in the distance? Can you see any interesting buildings?

A large, empty rectangular box with a black border, intended for drawing a view from a window.



# Puzzle



## Bath Word Search

Now have a go at the word search. Think about different parts of the building and what there is in the city. The words to find are at the bottom of the page.

C B T H I B P R C H A V F  
O A B B E Y A A O U O Y I  
J T R E E S D F L O W E R  
P H E R I S E T U S E N E  
E D R A I A R M M G I F P  
S T A I C A S E N E B E L  
S T R O I K G C R A R M A  
P I G E O N S E S R O H C  
B T T N S P O I S L M K E  
A A E R O T N E N Y A S L  
T K E H O U S E S T N O A  
R K S A M E S O M E S P A  
A M O O R Y L B M E S S A  
P U M P R O O M T E Q S T

HORSES  
CARRIAGES  
ROMANS  
SPA  
PUMP ROOM

BATH  
STAIRCASE  
ABBAY  
TREES  
PARKS

CLASSICAL  
STATUES  
CRESCENT  
ASSEMBLY ROOM  
SHOPS

FIREPLACE  
COLUMN  
FLOWER  
HOUSES  
PIGEONS

How many of these words did you find? Put your score in the box.

/
20

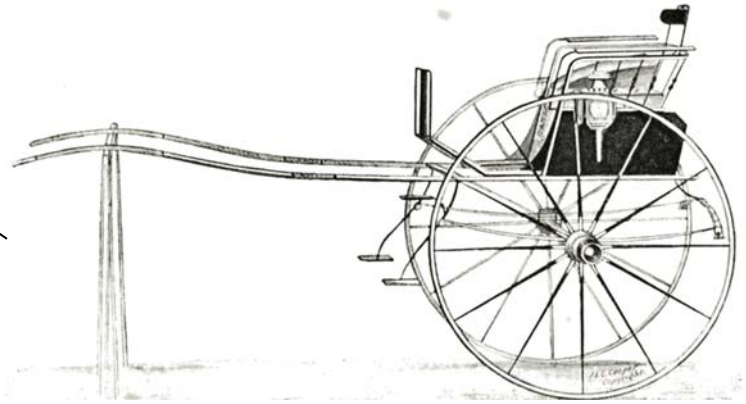


## Which carriage is which?

In Georgian times there were no cars or trains, people travelled to Bath by horse or carriage. Match the name to the type of carriage.

### TROIKA

Uses three horses to pull the carriage.



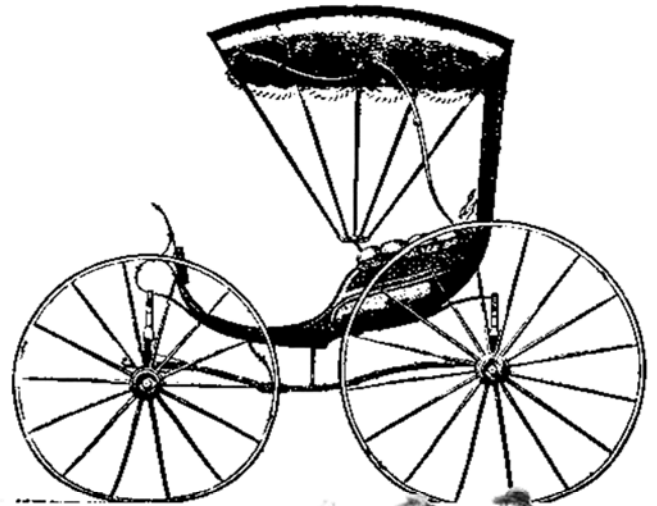
### GIG

Two wheeled open top cart.



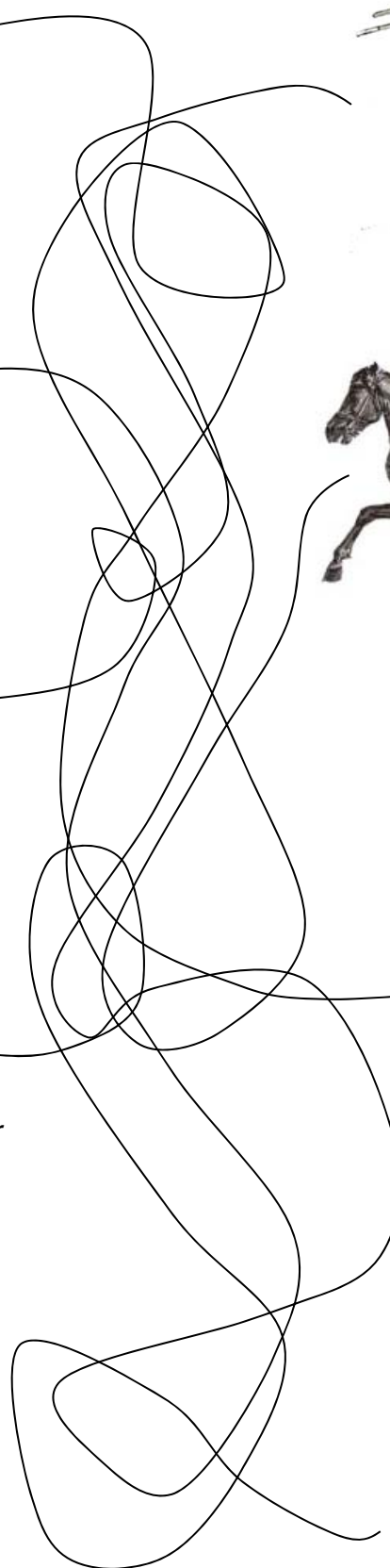
### PHAETON

Four wheeled carriage.



### COACH

Large closed carriage with 2 or more horses.





## Can you answer these questions correctly?

1. What county is Bath in?

Buckinghamshire

Monmouth

Devon

Somerset

---

2. Which one is not a type of carriage?

Troika

Bicycle

Coach

Phaeton

---

3. What was Bath called in Roman times?

Aquae Sulis

Aquae Mulis

Sulis Minerva

Barthionys

---

4. In 1820 King George III died. How many King Georges have there been since?  
(psst...look at Unruly Rulers!)

One

Three

Six

Ten

---

5. What is the name of the river in Bath?

Thames

Seine

Avon

Yarra

---

6. The first king of England was crowned at Bath Abbey in AD 973. What was his name?

Rufus

Edgar

Cnut

William

---

7. What creatures carved onto Bath Abbey are climbing ladders?

Devils

Angels

Vampires

Werewolves

---

8. What is the name of the Roman goddess who the romans named the hot water spring after?

Athena

Minerva

Juno

Venus

---

9. What is the name of the famous bridge in Bath?

Roman Bridge

Tower Bridge

Bath Bridge

Pulteney Bridge

---

To find the answers turn over...



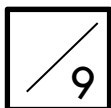


## Answer sheet:

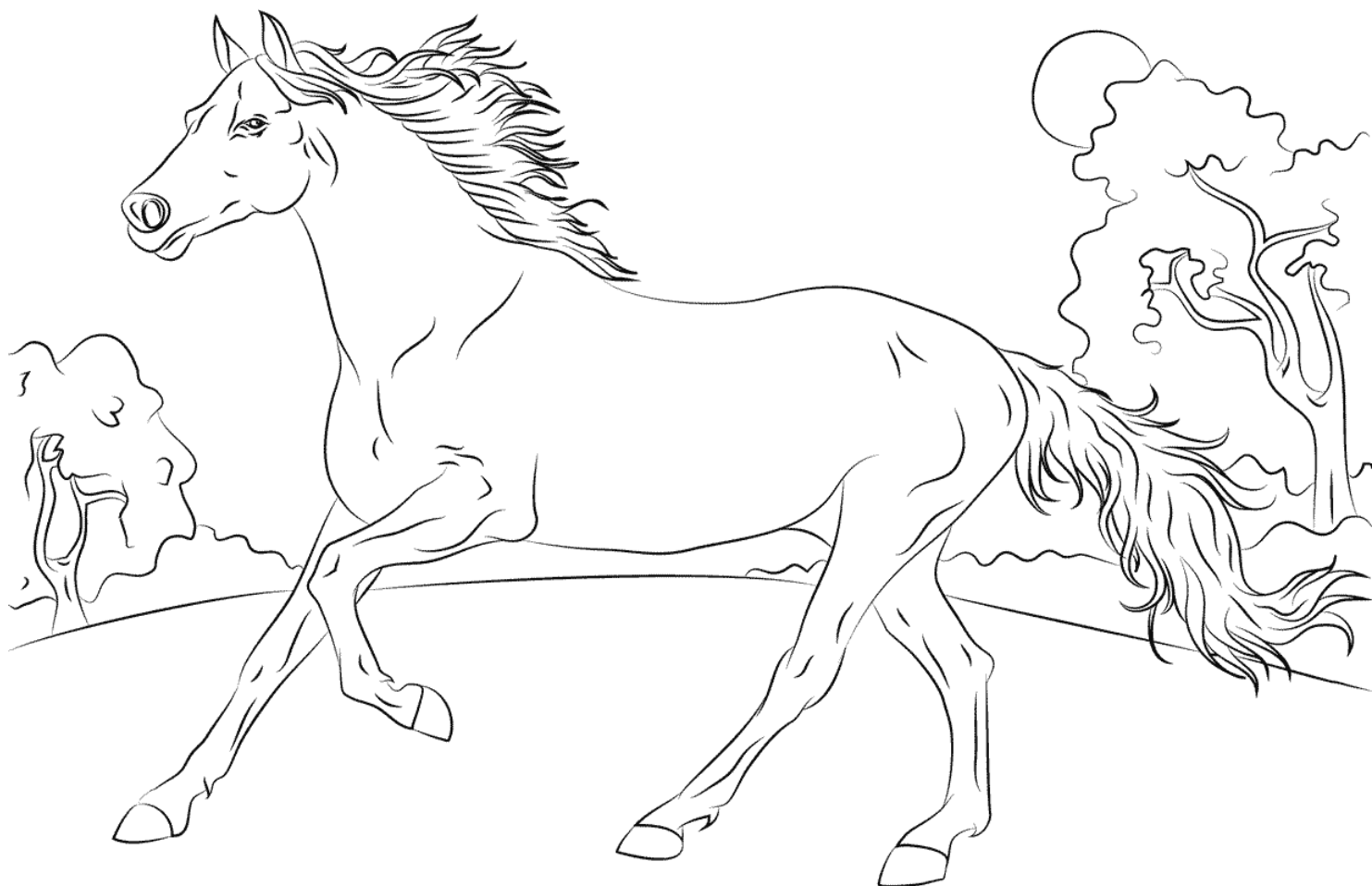
### Question & Answer:

1. Somerset
2. Bicycle
3. Aquae Sulis
4. Three
5. Avon
6. Edgar
7. Angels
8. Minerva
9. Pulteney Bridge

How many did you get right?



Colour in the horse below.



## Fact:

Did you know that the Second Baron of Rothschild used zebras instead of horses to pull his carriage!





# Roman Numerals

## Fact:

The Romans used their system of numbers, **Roman numerals**, to help them price goods for trade. They used just **seven** letters (I, V, X, L, C, D and M) to make thousands of numbers.

The numbers we use today are from Arabia and called Arabic numerals.

## Roman Numerals

1	I
2	II
3	III
4	IV
5	V
6	VI
7	VII
8	VIII
9	IX
10	X
50	L
100	C
500	D
1000	M



Because Romans only used 7 marks (we use 10) sometimes they had to combine marks into a little sum. For example, have a look at number 4 (that's IV.) Can you see how the Romans said '4' by putting 'I' in front of 'V'? It's like saying "5-1=4".

They put a '1' in front of another number when they mean 'take away this number from the next'. Have a look at a Roman's '9'. Can you work out what they've done?

The year 1600 in Roman numerals is MDC (1000+500+100).

The year 2015 is MMXV. Can you see why?

Have a go at writing the year you were born in Roman numerals .....

Write what you think the numbers below are beside each:

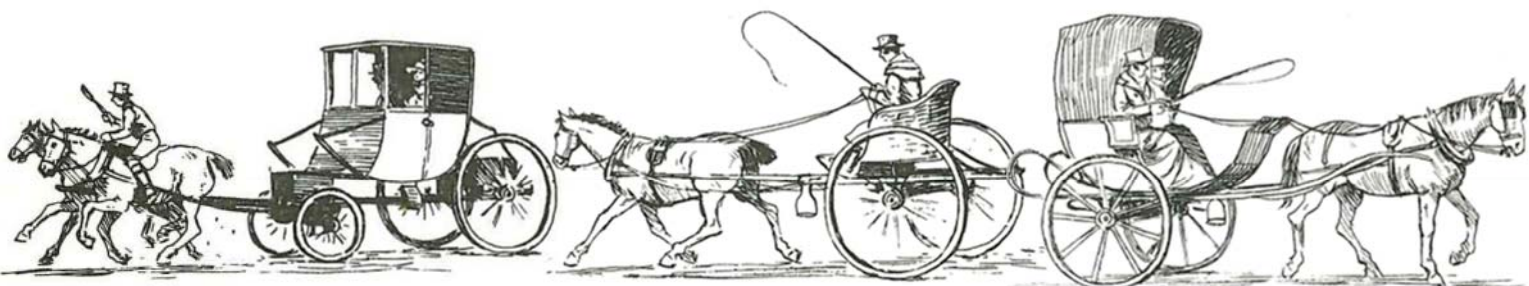
VII	XI	XX	CC
IX	XV	XL	CD

Make up some sums below to test your Parents!



## Design your own carriage

In Georgian times everyone travelled by carriage. There were lots of different types of carriages. Some were for going to town, some were for big groups of people, some were used for when it was raining and some were used for going for rides. Design your own carriage, be as creative and colourful as you like. Don't forget to give it a funny name!



Post-chaise

Whiskey

Cabriolet





## Bake some Sally Lunn's Tea Buns

Bath has been famous for its buns since the 1700s. Even Jane Austen the famous writer wrote about them in a letter! Here's a simple recipe for you to try. You might need the help of an adult.

Here's a simple recipe for you to try. You might need the help of an adult.

### Batter ingredients:

90g plain flour  
140ml warm milk  
1 tsp caster sugar  
2tsp dried yeast

Remember to pre-heat the oven to 220 °C

- Mix all the batter ingredients in a bowl, beat until smooth and leave in a warm place until it goes frothy
- Mix the dough ingredients in with the batter and stir until smooth
- Cover the mixture and leave until its doubles in size (this might take a couple of hours)
- Put the dough (say 'doh') onto the worktop and make small buns
- Put the buns onto a greased tray
- Bake for 35 minutes until golden brown
- Put the buns on the side and leave to cool





**Colour in these Georgian outfits**

